

2025 EUROPEAN CHAMPIONSHIP

Star Class

Open

Viareggio (LU) Italy

June 9th – 14th 2025

The organizing authority are Club Nautico Versilia and Società Velica Viareggina as sanctioned by International Star Class Yacht Racing Association. The Lega Navale Italiana, Comitato Circoli Velici Versiliesi, Viareggio Porto SPA and Municipality of Viareggio are working in conjunction with Organizing Authorities.

SAILING INSTRUCTION (SIs)

1 Rules

- 1.1. The regatta will be governed by the rules as defined in the Racing Rules of Sailing (RRS) 2025-2028.
- 1.2. National Prescriptions do not apply.
- 1.3. RRS Appendix P will apply. RRS P2.2 and RRS P2.3 are deleted. RRS P2.1 will apply to all penalties.
- 1.4. STCR 34.3.1 changes RRS 32 to provide that courses will not be shortened.
- 1.5. STCR 34.3.1: RRS 33b will apply; leg length may be changed within the parameters of the Format being sailed.
- 1.6. STCR 34.6.3 changed RRS 35, RRS A5 and RRS A10 to provide that boats not finishing within the stated time in the STCR after the first boat sails the course and finishes within the time limit will be scored "TLE" as defined therein.
- 1.7. STCR 35.5 changes RRS 44.1 and RRS P2.1 so that the two turns penalty is replaced by a one turn penalty.
- 1.8. [NP][DP] While racing boats shall display bow number, the OA will supply the numbers and instructions for their application in a separate Notice to Competitors before start of registration. Competitors are responsible for maintaining their bow numbers visible on both side of the bow

- 1.9. The notation [NP] in a rule of the sailing instructions (Sis) means it shall not be grounds for protest by a boat. This changes RRS 60.1
- 1.10 Appendix T, Arbitration, will apply as amended SI 16

2. **Changes in the Sailing Instructions**

- 2.1. Any change to the Sis will be approved by the Principal Race Officer (PRO) and will be posted by 09:00 hrs on the day it will take effect, except that any change in the schedule of races will be posted by 20:00 hrs on the day before it will take effect. Failure to post notice on the regatta website will not be ground for redress. This changes RRS 61.4(b)
- 2.2. Any change to the Sis will be posted online on Racing Rules of Sailing available at this link or QR code:

<https://www.racingrulesofsailing.org/documents/9909/event?name=Europea%2520Championship%25202025%2520-%2520Star%2520Class>



Official Notice Board

3. **Communication**

- 3.1. Notice to competitors will be posted online
- 3.2. On the water, the race committee intends to monitor and communicate with competitors and support persons via VHF radio on channel 69
- 3.3. Boats may be hailed by Race Officials by either Bow or Sail number
- 3.4. [DP] Failure of any information to be given or received shall not be grounds for redress. Information gathered on any other VHF channel or Race Committee (RC) communication channel shall not be ground for redress, except when a request for redress under this instruction is initiated by the RC or Jury: These changes are added to RRS 61.4(b)

4. **Code of Conduct**

[DP] Competitors and Support Persons shall comply with reasonable requests from Race Officials. Note RRS 37

5. **Team Weight**

All teams must demonstrate compliance with STCR 31.1.3 prior of 11:00 on June 12th, 2025

6. **Signals made ashore**

- 6.1. Signal made ashore will be displayed from the flag pole in front of Club Nautico Versilia
- 6.2. When flag AP is displayed ashore , “1 minute” is replaced with “not less than 40 minutes. This changes RRS Race Signals

7. **Registration and stamping of the sails**

- 7.1 Registration and stamping of the sails:

Monday. June 09th from 3.00 pm until 7.00 pm
Tuesday. June 10th from 9.00 am until 1.00 pm and 3.00 pm until 6.00 pm

7.2. Date of Racing:

Wednesday	June 11 th	Race 1-2	Warning Signal at 1.00 pm
Thursday	June 12 th	Race 3-4.	Warning Signal at 1.00 am
Friday	June 13 th	Race 5.6.	Warning Signal at 1.00 am
Saturday	June 14 th	Race 7	no Warning Signal will be given after 3.00 pm

7.3. Number of Races:

Two (2) races are scheduled for the first three days of racing, however up to three (3) races may be sailed on anyone day.

7.4 The scheduled time for the warning signal for the first race is Wednesday, June 11th 2025 at 1 pm

The scheduled time of the warning signal on the following race days is 12.00 am

7.5. On Sunday June 15th 2025 no warning signal will be made after 3.00 pm

7.6. 7 races, per STCR 27, are scheduled

7.7. The RC reserves the right to get one race ahead of schedule should expected sailing conditions warrant

7.8. To alert boats that a race will begin soon, the orange starting line flag will be displayed with one sound at least five minutes before a warning signal will be made

8. Measurement

8.1. Each participating boat shall have a valid Measurement Certificate and Weight Certificate.

Only boats Which have completed registration, paid all entry fees and have stamped two sets of sails within 10.00 on June 11th 2025 are entitled to race.

8.2. Crews shall demonstrate compliance with crew weight limits in accordance with STCR 31.1.3 Prior June 11th 2025 at 10.00

8.3. Each boat shall show the sail number and the national letters as indicated on the Official Entry Form.

8.4. Bow numbers will be assigned and given to each participating boat. They shall be affixed to the hull and according to the Sis

8.5. A boat may be ordered to be re-checked during the regatta.

9. Class Flag

The Class flag will be a white flag with a red star

10. Racing area

Racing will be conducted in the Mediterranean Sea in open water offshore of Viareggio, Approximately 1.5 to 4. Miles west of Viareggio

11 Course [NP]

11.1 Courses 0,1,2 ,3 or 4 STCR 34.3, consistent with Format B will be used. The minimum leg length 1,25 miles. Courses 3 and 4 will use a leeward gate (3s and 3p)

11.2 No later than the warning signal, the RC signal vessel will display the course (numeral pennant), the approximate compass bearing and distance of the first leg

12. Marks

12.1 Courses marks (1, 1a, 3s, 3p) will be inflatable orange marks

12.2 The starting marks will be the RC signal boat at the starboard end and port pin end boat

12.3 The finishing marks will be a RC vessel at the starboard, and a port pin end
Inflatable yellow mark

12.4 Change mark is inflatable yellow mark

13. The start

13.1 [DP] Prior to the first warning signal of the first race of the day, boats shall sail on Starboard Tack by the stern of the RC starboard – end boat displaying flag L, to be recorded.

13.2 The starting line will be between a staff displaying an orange flag on the starboard end RC vessel and a staff displaying an orange flag on the port end RC vessel.

13.3 In the event of an individual recall, the bow or sail number or other identification of any boat or boats that are identified as OCS may be announced on VHF channel 69. Failure of a boat to see or hear recall notification, and the timing and order of such hails, or the length of time it takes to make a notification on the VHF will not be grounds for redress.

This changes 61.1(a).

13.4 A boat not starting within ten (10) minutes after the starting signal will be scored “Did Not Start” (DNS), without a hearing. This changes RRS 60.5(b), RRS A5 and STCR 34.7.

13.5 A RC service/mark boat displaying code flag G may pass to windward of the fleet in the event of an abandonment, postponement or general recall which means, “The RC has signaled an abandonment, postponement or general recall. Boats shall return to the starting area immediately.”

13.6 A RC service/mark boat positioned near Mark 1 may attempt to notify any OCS, UFD, or BFD boats by displaying the appropriate starting penalty flag and displaying their bow/sail numbers. Boats so notified shall leave the race course immediately.

14. Changing the next leg of the course

14.1. To change the next leg of the course, the RC will lay a new mark (or move the finishing line) and remove the original mark as soon as practicable. When in a subsequent change a new mark is replaced, it will be replaced by an original mark.

14.2 [NP] In addition to signaling the change from a RC service/mark boat, the RC will attempt to announce the change on VHF Channel 69 as boats approach the RC service/mark boat signaling the change.

14.3 When the position of the windward mark is changed, the offset mark will be re-laid.

If the Race Committee changes the position of the leeward marks (gate), the original gate marks will be re-located. If the Leeward mark is to be only one mark, this mark shall be left to port; this mark is not considered a gate and RRS 18.4 will apply.

15 The finish

15.1 The finishing line will be between staffs displaying blue flags on the finishing mark or a staff displaying a blue flag on the starboard end and the course side of nearby finishing mark on the port end.

16. Penalty System

16.1. Appendix T, Arbitration, will apply.

16.1.1. Appendix T1 (b) is changed to read; A Post-Race Penalty is a Scoring Penalty equal to 30% of the score for DNF, or 50 % of the difference between the boat’s finishing position in the race and the score for DNF, whichever is less. The Scoring Penalty is calculated as stated in rule 44.3(c). However, rule 44.1(a) applies.

16.2. After a hearing, penalties for violations of (Class/NoR/SI) rules other than those of RRS Part 2 will be at the discretion of the Jury and may include disqualification.

17. Time Limits

17.1. The time limit will be 45 minutes for first beat and 3 hours for complete Course.

18. Hearing Requests

Protests and requests for redress or reopening shall be delivered Online on the Racing Rules of Sailing Event Website, filling out the online form, available at this link:

<https://www.racingrulesofsailing.org/documents/9909/event?name=Europea%2520Championshi%25202025%2520-%2520Star%2520Class>

18.2 Only in case of technical issues, paper forms will be available at the Race Office. This changes RRS 61.3 and 62.2.

18.3 The protest time limit shall be one (1) hour after the docking time of the RC finish vessel. The protest time limit will be posted on the ONB.

18.4 Notices will be posted on the ONB no later than 15 minutes after the protest time limit to inform competitors of hearings in which they are parties. Hearings will be held on the 1st floor of the Club Nautico Versilia and parties and their witnesses should report there at the scheduled time.

18.5 Within the protest time limit, the RC shall post the bow numbers or sail numbers of all of the boats that are disqualified or penalized under RRS A5.1.

19. Scoring

19.1 The scoring system is the Low Point System in RRS Appendix A.

19.2 As per STCR 27.1, four (4) races are required to be completed to constitute a series.

19.3 A boat's series score will be the total of her race scores with her worst score discarded when five (5) or more races are completed.

19.4 There will be a Junior division, Master's division, a Grand Master's division. Entrants in these divisions also will be competing for the overall Championship. (see also SI 27.)

19.5 To request correction of an alleged error in posted race or series results, a boat may complete a scoring inquiry form available online at this link: <https://www.racingrulesofsailing.org/documents/11544/event?name=Star%2520Class%2520European%2520Championship>

<https://www.racingrulesofsailing.org/documents/11544/event?name=Star%2520Class%2520European%2520Championship>

20. Liability and Safety [NP][DP]

20.1 The safety of a boat and her entire management, including insurance shall be the sole and inescapable responsibility of the owner and/or entrant.

20.2 Competitors leaving the race course before the end of a race shall inform the RC or the JURY/PROTEST COMMITTEE/RACE OFFICE as soon as possible.

20.3 Competitors not leaving the dock on a race day shall inform the race office

21. Replacement of crew or equipment

- 21.1 Any request for a change of crew shall be submitted to the RC in writing prior to 09:30 on the day of the race for which the change is to be made. If the RC grants permission, it will do so in writing and post such notice on the official notice board.
- 21.2 A change of helmsman will not be permitted.
- 21.3 Substitution of damaged or lost equipment will not be allowed unless authorized by the Technical Committee or Race Committee. Requests for substitution shall be made to the TC/RC at the first reasonable opportunity.

22. Event Advertising [NP][DP]

Boats shall display event advertising supplied by OA. WS regulation 20.9.2[NP]

23. Official Boats

23.1 Official boats will be marked as follows:

- Race Committee Signal Boat: "hosting YC burgee"
- Service/Mark boats: White flag with red or black "S"
- Jury boats: Yellow flag with black "J"
- Press boats: White flag with black "P"
- TC boat: White flag with black "M"

23.2 Service/Mark boats may be stationed beyond each mark. At the finish, the mark boat may be stationed at the finishing line. When on station only, each mark boats will display 'a large visible flag or shape'. Failure of a mark boats to be on station or to display her signal will not be ground for redress. This changes RRS 61.1(a).

24 Support Boats

- 24.1 Coach boats, support boats and private spectator boats are expected to monitor VHF channel 71 and to render assistance to a boat in danger when requested by the boat, or at the request of the RC or Jury. See RRS 37.
- 24.2 Coach boats, support boats and private spectator boats shall stay 100 meters outside areas where boats are racing from the time of the warning signal until all boats have finished racing.
- 24.3 A boat shall receive no outside assistance from coach boats, support boats or private spectator boats once she has left the dock for the day until the finish of the last race of the day, except in the case of emergency and/or towing supplied by the OA and available to all participants.
- 24.4 Coach and support boats associated with a competitor shall register in Race Office. Identification sticker will be issued to each boat and all such boats should monitor channel 71

25. Haul out restrictions [NP][DP]

Boats must be the water and in their designated berth in the area close to the regatta village in the port of Viareggio not later than 18.00 hrs. on June 10th, 2025 until the conclusion unless different provisions are stated in the Sailing Instruction. Berthing will be available starting June 8, 2025 at 21.00 hrs.

26. Diving equipment and plastic pools [NP][DP]

Underwater breathing apparatus and plastic pools or their equivalent shall not be used around boats between the preparatory signal of the first race and the end of the Championship.

27. Prizes

See Notice of Race 14

28. Risk Statement

RRS 3 states: 'The responsibility for a boat's decision to participate in a race or to continue to race is hers alone.' By participating in this event each competitor agrees and acknowledges that sailing is a potentially dangerous activity with inherent risks. These risks include strong winds and rough seas, sudden changes in weather, failure of equipment, boat handling errors, poor seamanship by other boats, loss of balance on an unstable platform and fatigue resulting in increased risk of injury. **Inherent in the sport of sailing is the risk of permanent, catastrophic injury or death by drowning, trauma, hypothermia or other causes.**

29. Insurance

Boats sailing in this regatta (each 'person in charge' per RRS 46) must be adequately insured and shall hold a valid insurance certificate showing proof of third-party liability for racing risks. Minimum cover of Euro 2,000,000.00 per incident or the equivalent

30. Media Right

By participating in the event competitors automatically grant to the OA and their sponsors, the right in perpetuity to make, use and show, from time to time at their discretion, any motion pictures and live, taped or filmed television and other reproductions of the athlete during the period of the without compensation.

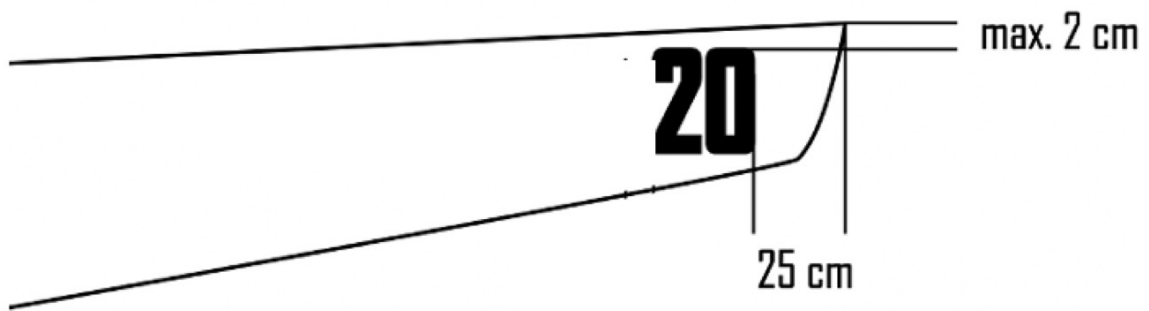
Attachments

Bravo - Bow number positioning

Delta - courses

Attachment Bravo
Bow number positioning

Starboard



Attachment Delta Courses

Course "3"
 ★ See STCR 34.3.9 for approximate leg distances
 ★ See STCR 34.4.5 for 1a offset requirement

Start
 1
 1a
 3 (or gate 3s / 3p)
 1
 1a
 3 (or gate 3s / 3p)
Finish (upwind)

Course "4"
 ★ See STCR 34.3.9 for approximate leg distances
 ★ See STCR 34.4.5 for 1a offset requirement

Start
 1
 1a
 3 (or gate 3s / 3p)
 1a
Finish (downwind)

Course "6"
 ★ See STCR 34.3.9 for approximate leg distance

Start
 1
 2
 3
 1
 2
 3
Finish (off wind)

Course "7"
 ★ See STCR 34.3.9 for approximate leg distance

Start
 1
 2
 3
 1
 2
 3
Finish (upwind)